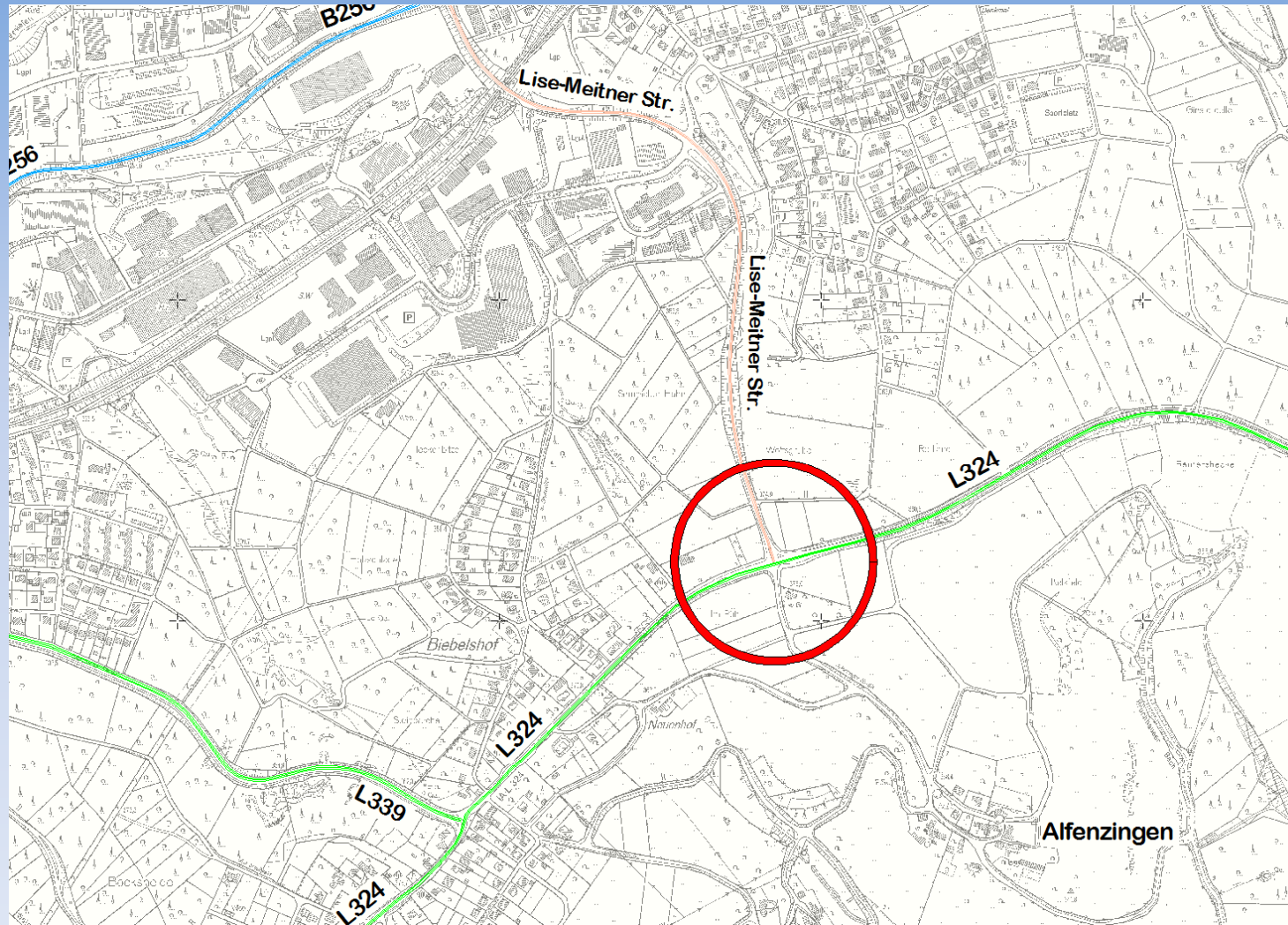


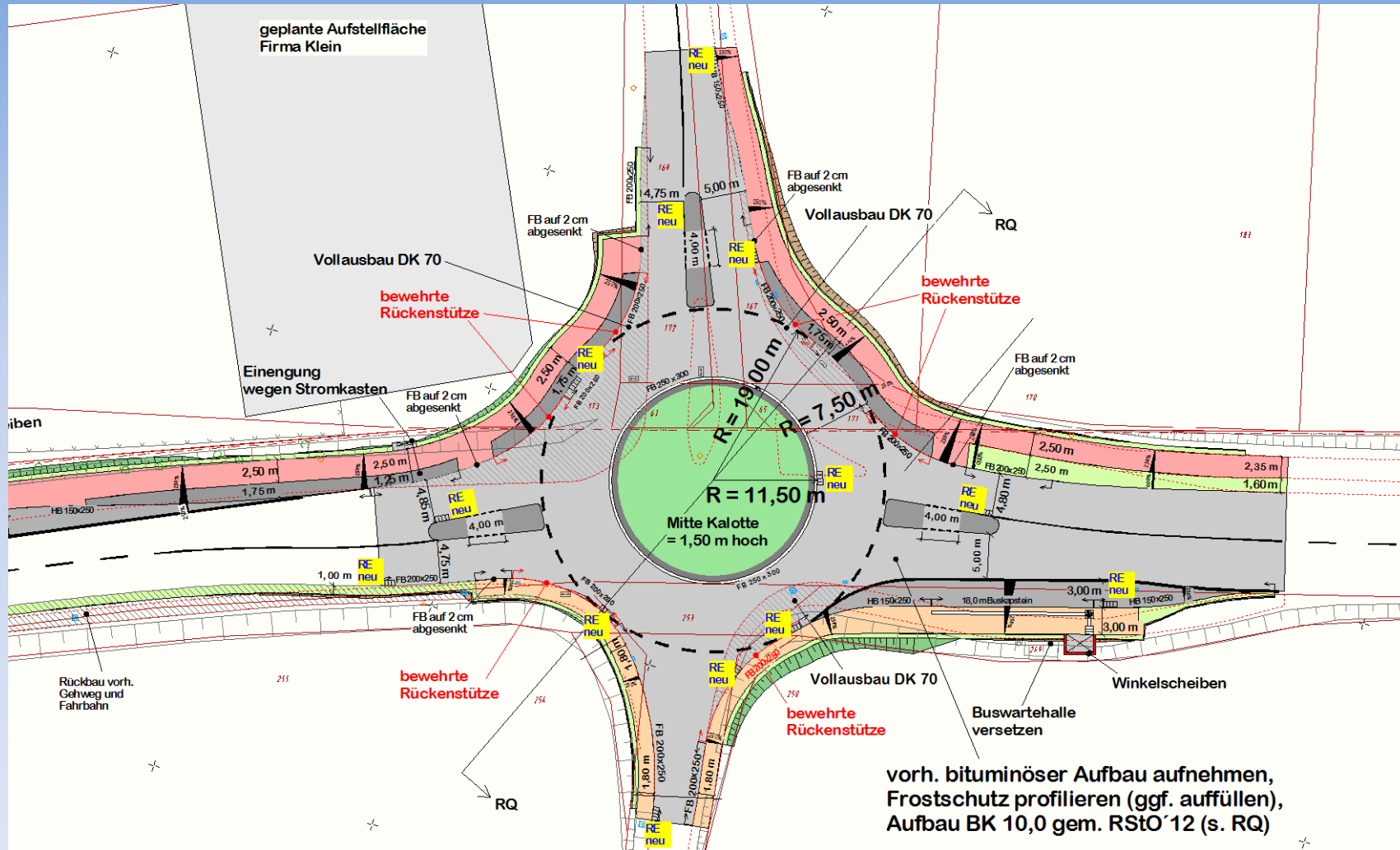
L 324 KVP Alfenzingen / Lise-Meitner Straße



L 324 KVP Alfenzingen / Lise-Meitner Straße

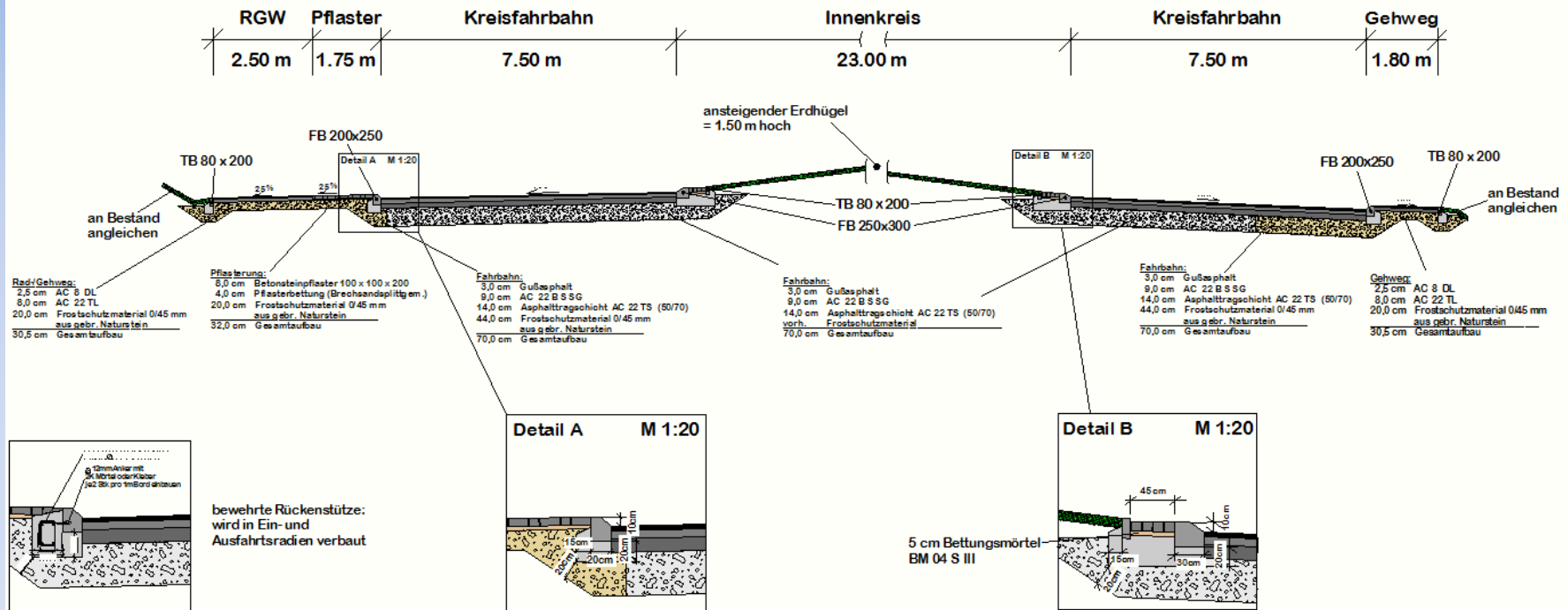


L 324 KVP Alfenzingen / Lise-Meitner Straße

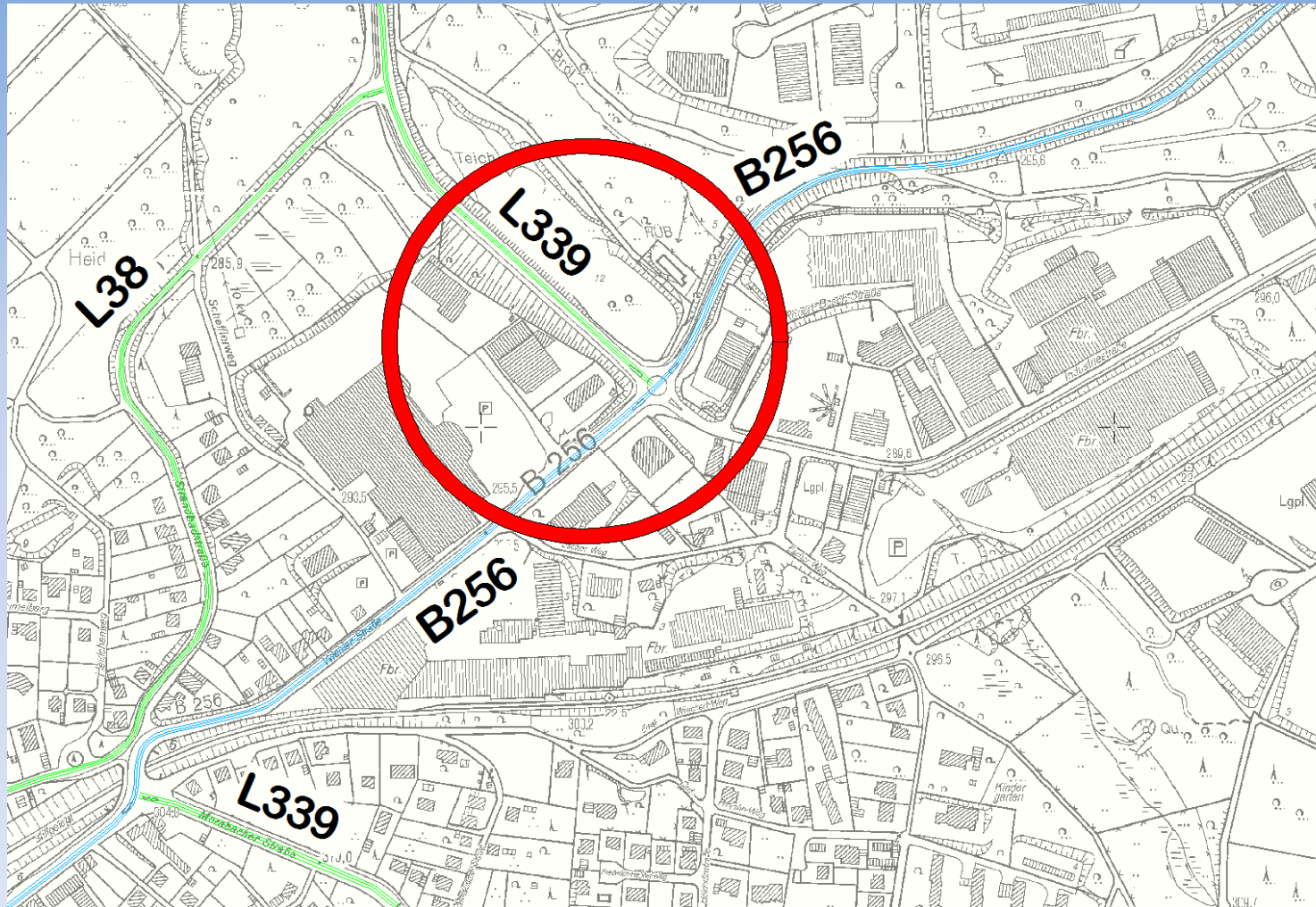


L 324 KVP Alfenzingen / Lise-Meitner Straße

Regelquerschnitt L 324
Aufbau gem. RStO '12 BK 10,0



B256 - L339 KVP Wiehler-Str.



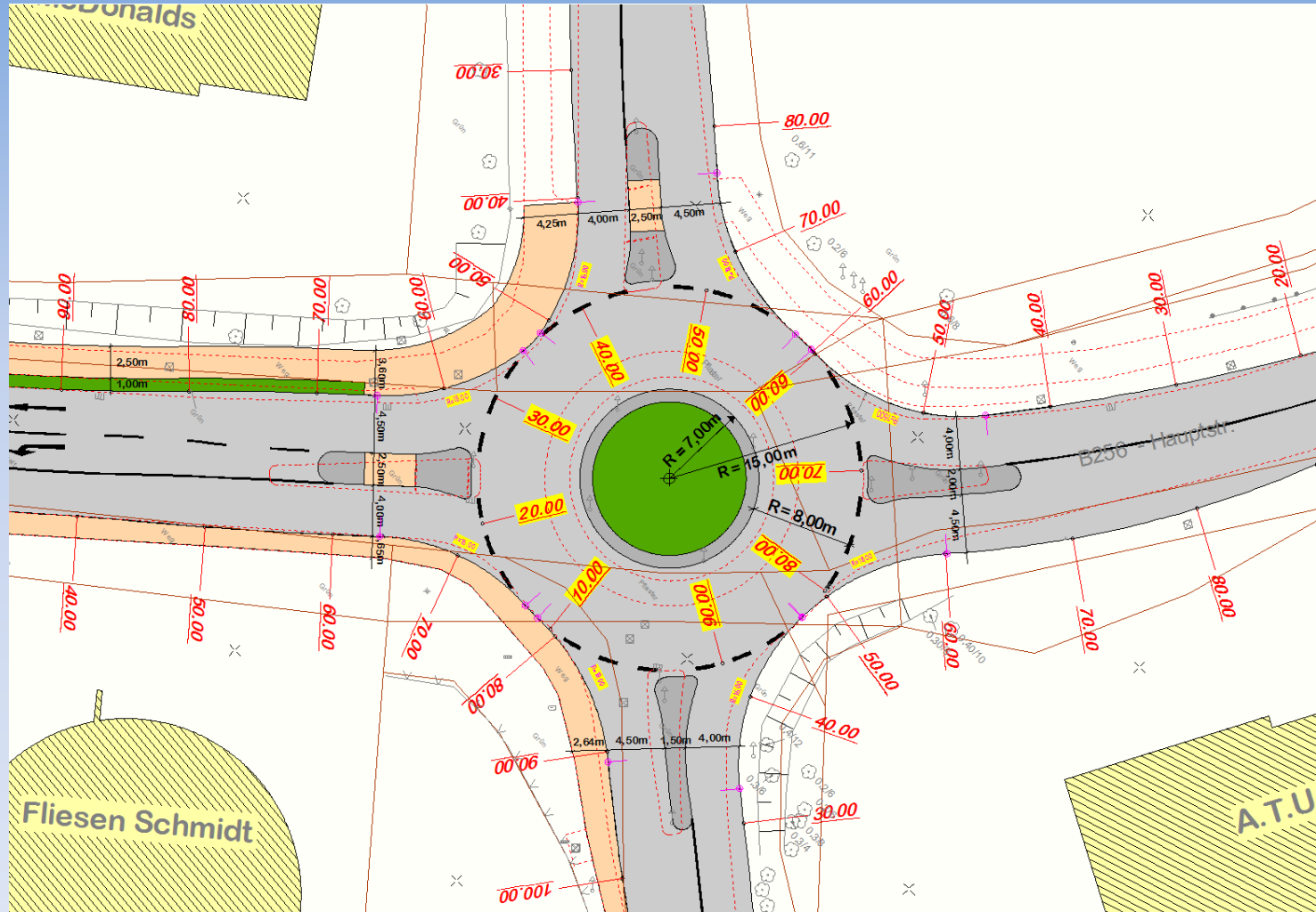
B256 - L339 KVP Wiehler-Str.



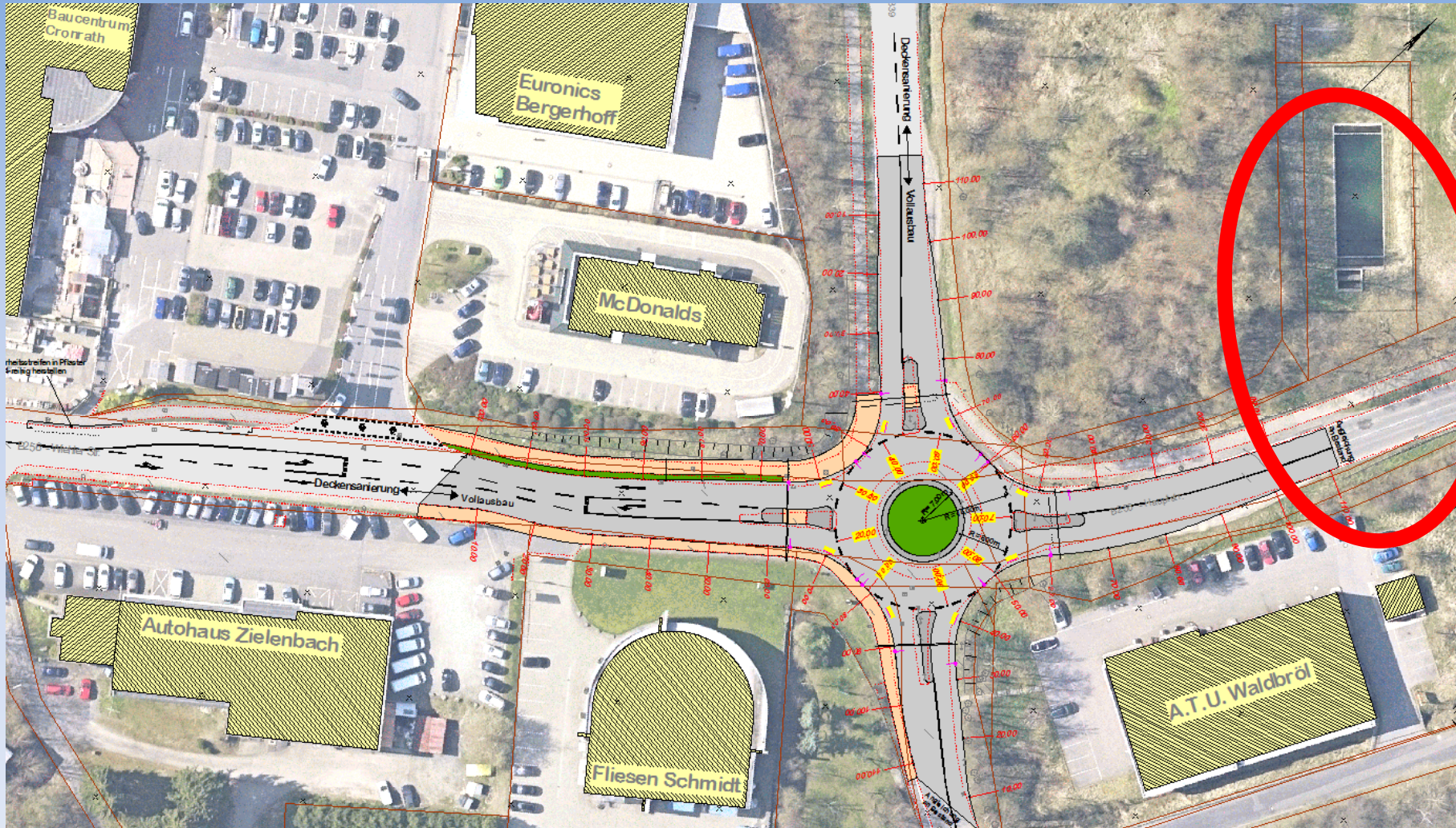
B256 - L339 KVP Wiehler-Str. Schadstellen



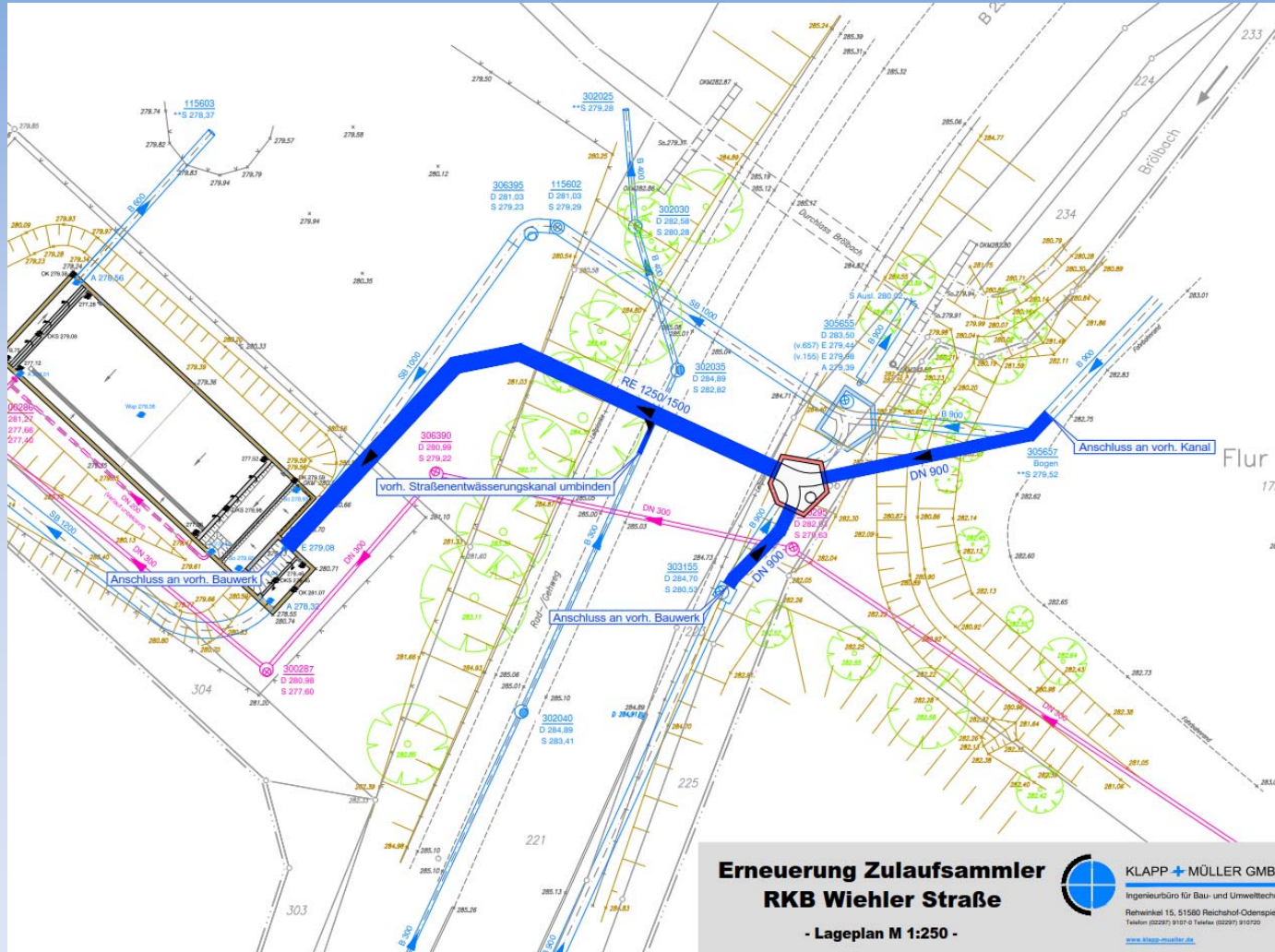
B256 - L339 KVP Wiehler-Str.



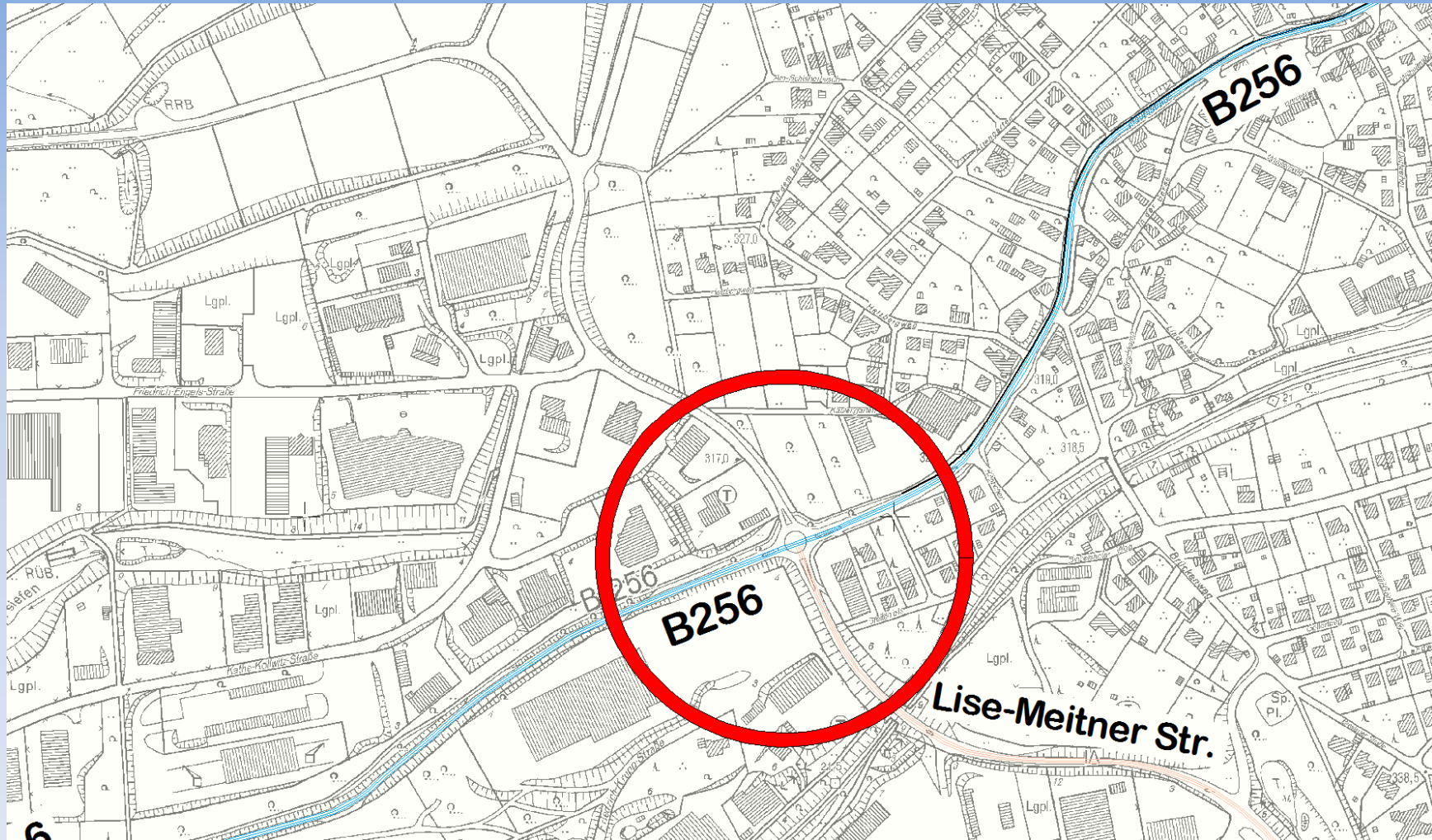
B256 - L339 KVP Wiehler-Str.



B256 - L339 KVP Wiehler-Str.



B256 – Lise-Meitner Str. KVP Hermesdorf



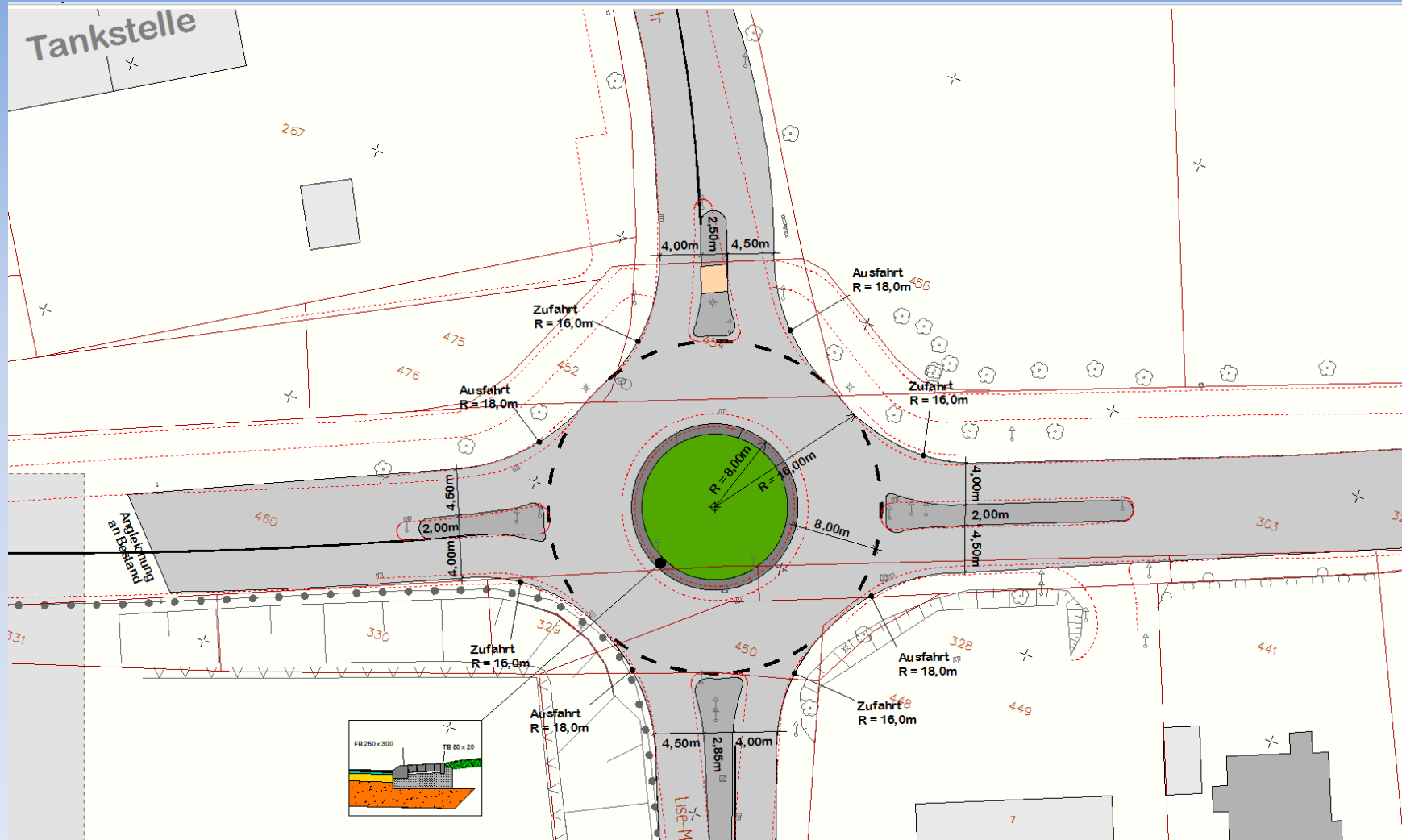
B256 – Lise-Meitner Str. KVP Hermesdorf



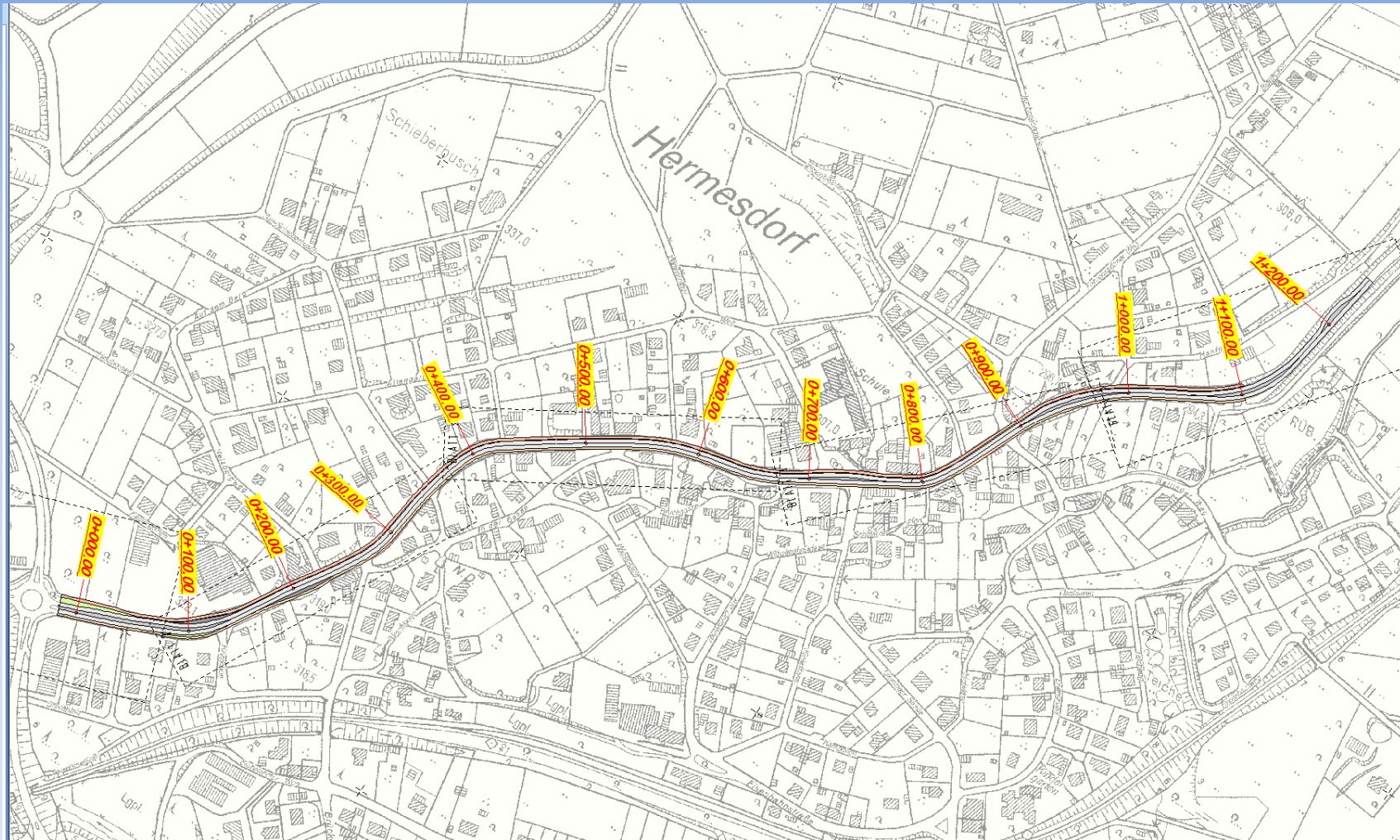
B256 – Lise-Meitner Str. KVP Hermesdorf Schadstellen



B256 – Lise-Meitner Str. KVP Hermesdorf



B256 – Umbau OD Hermesdorf



B256 – Umbau OD Hermesdorf



B256 – Umbau OD Hermesdorf



B256 – Umbau OD Hermesdorf



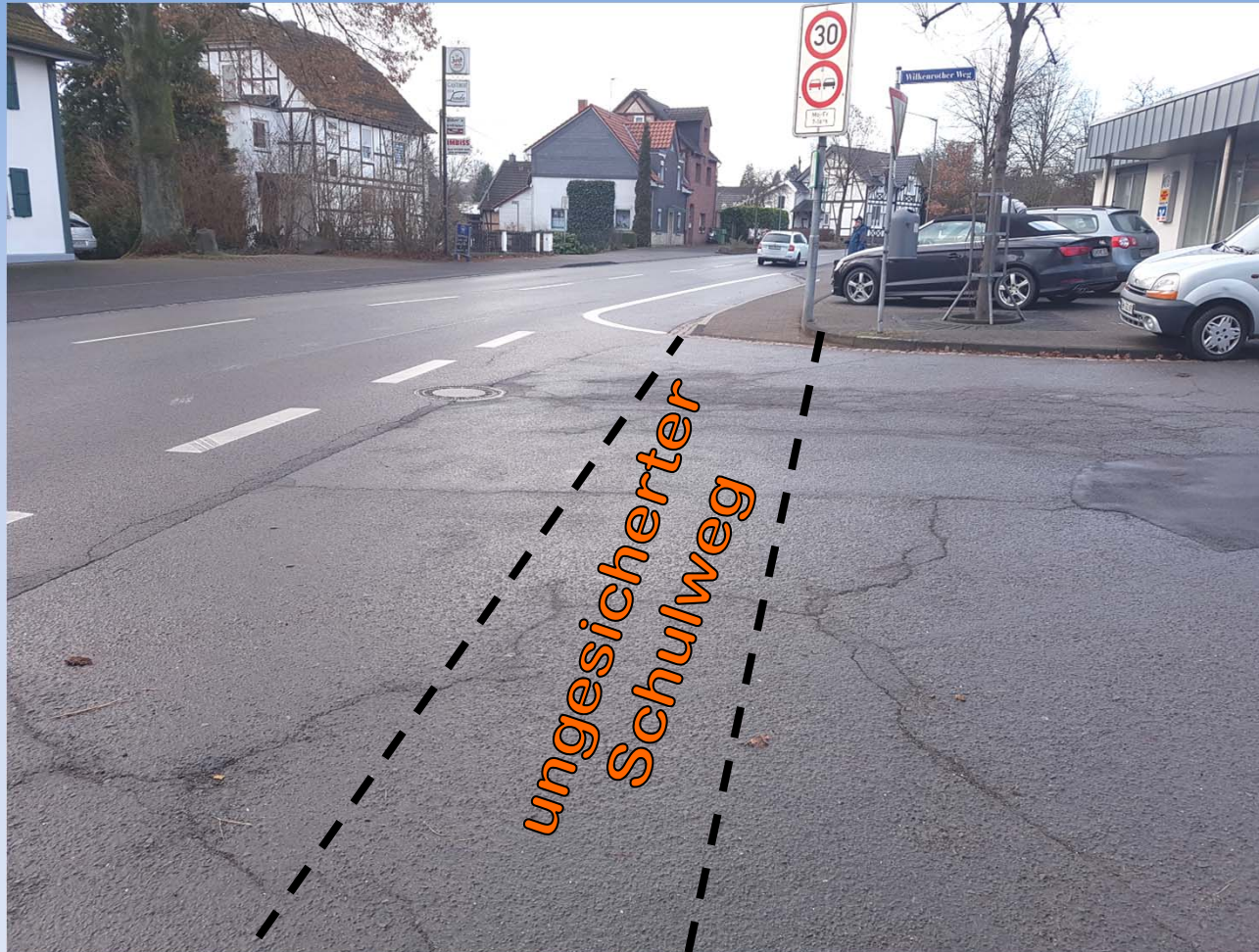
B256 – Umbau OD Hermesdorf



B256 – Umbau OD Hermesdorf



B256 – Umbau OD Hermesdorf



B256 – Umbau OD Hermesdorf



B256 – Umbau OD Hermesdorf

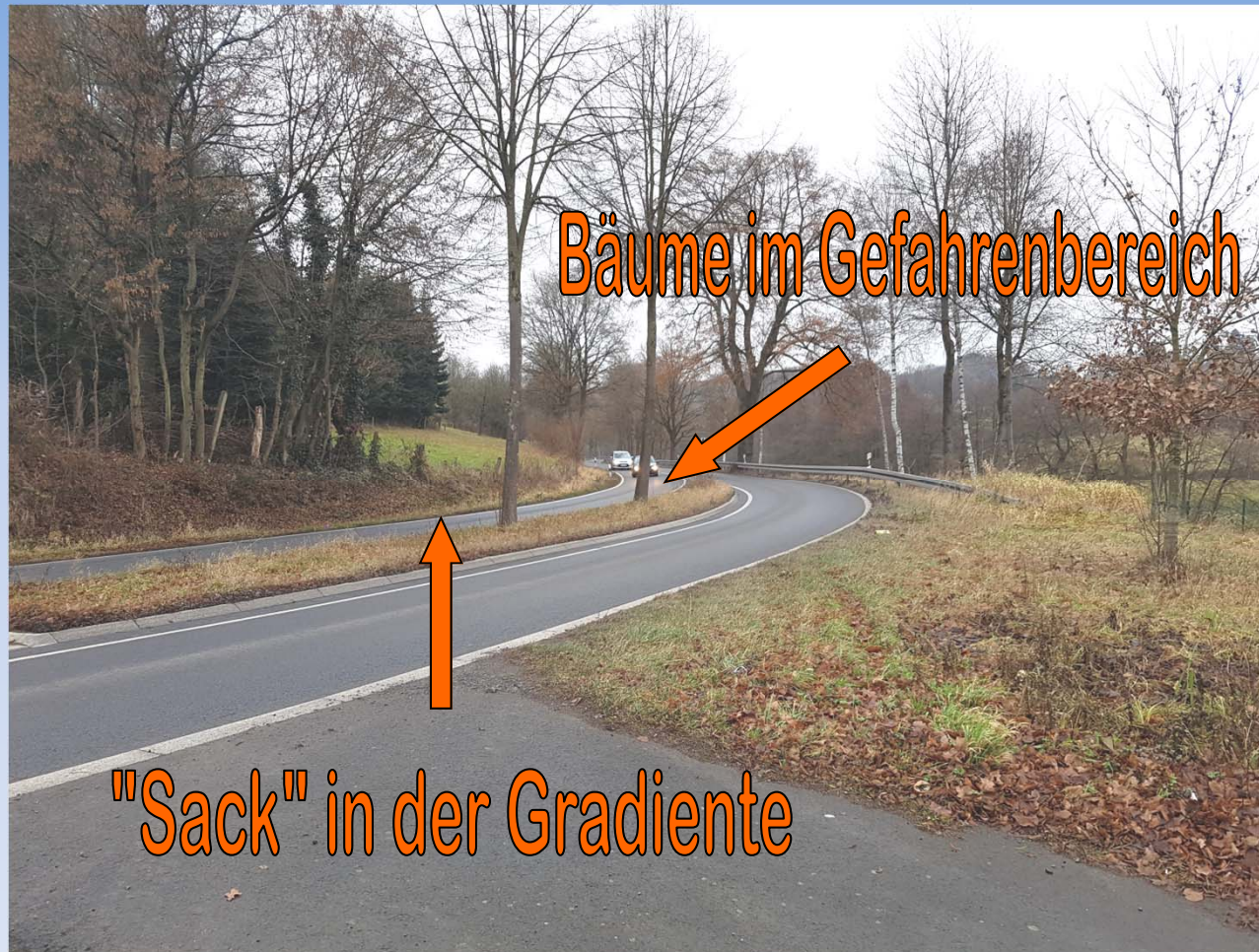


B256 – Umbau OD Hermesdorf



zu hohe Geschwindigkeiten

B256 – Umbau OD Hermesdorf



B256 – Umbau OD Hermesdorf



B256 – Umbau OD Hermesdorf



B256 – Umbau OD Hermesdorf



Durchfahrtshöhe
Rad-/Gehweg zu
gering

B256 – Umbau OD Hermesdorf



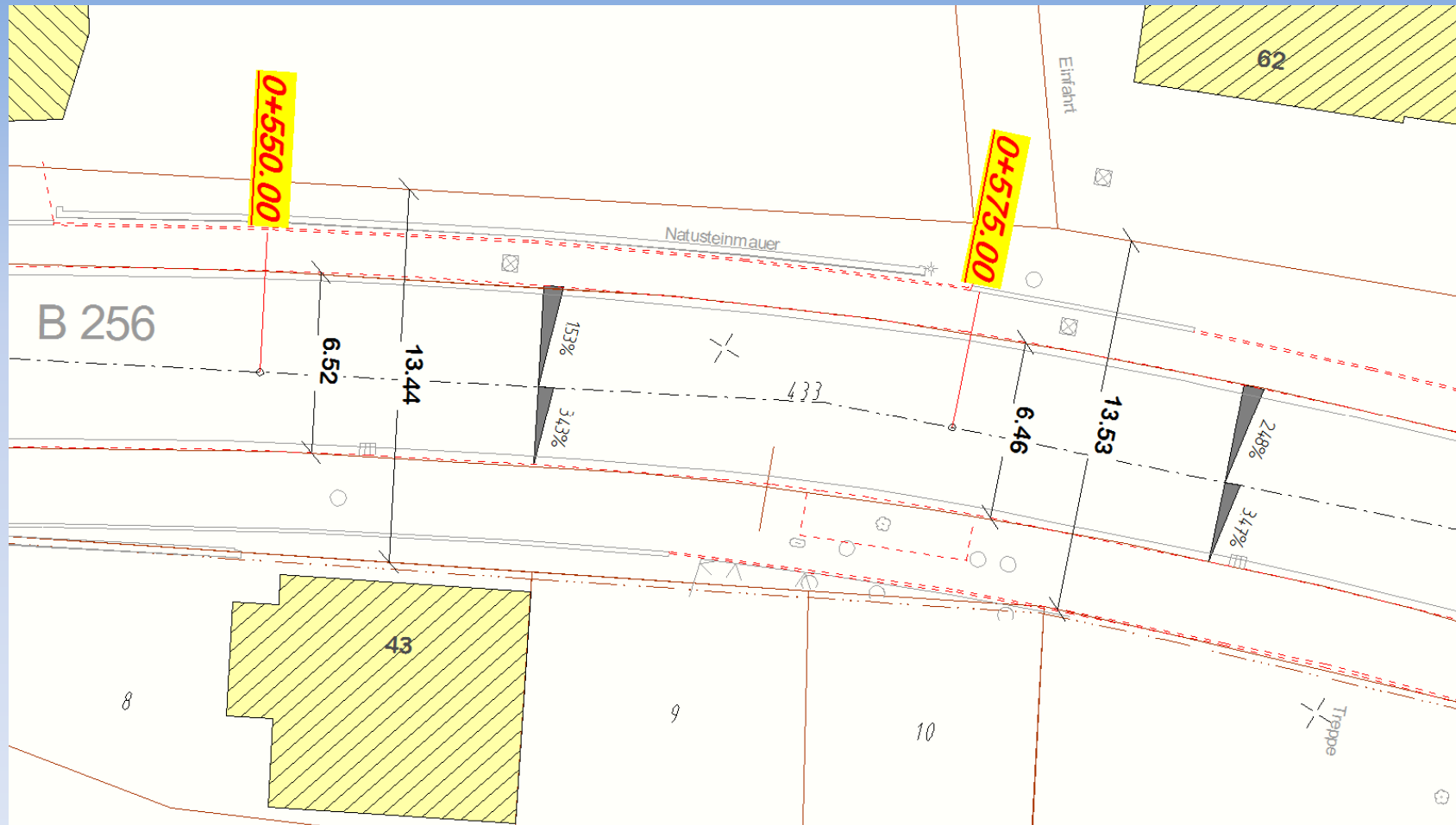
B256 – Umbau OD Hermesdorf

fehlender Gehweg

Bedarf augenscheinlich vorh.

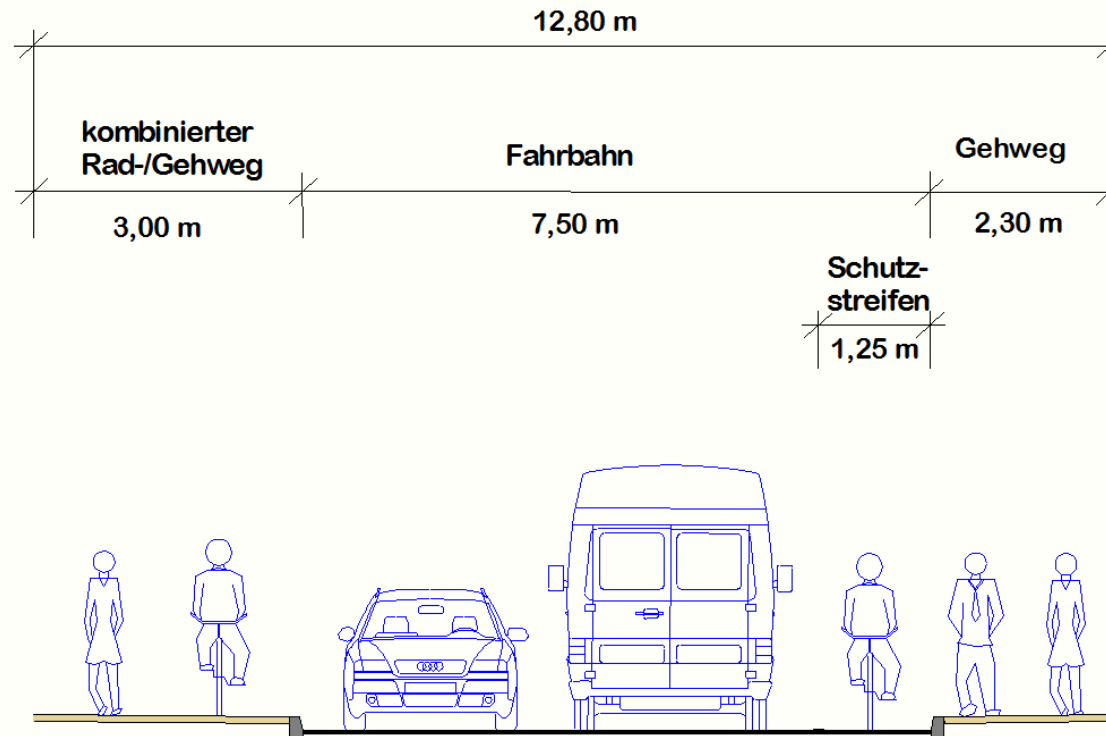


B256 – Umbau OD Hermesdorf

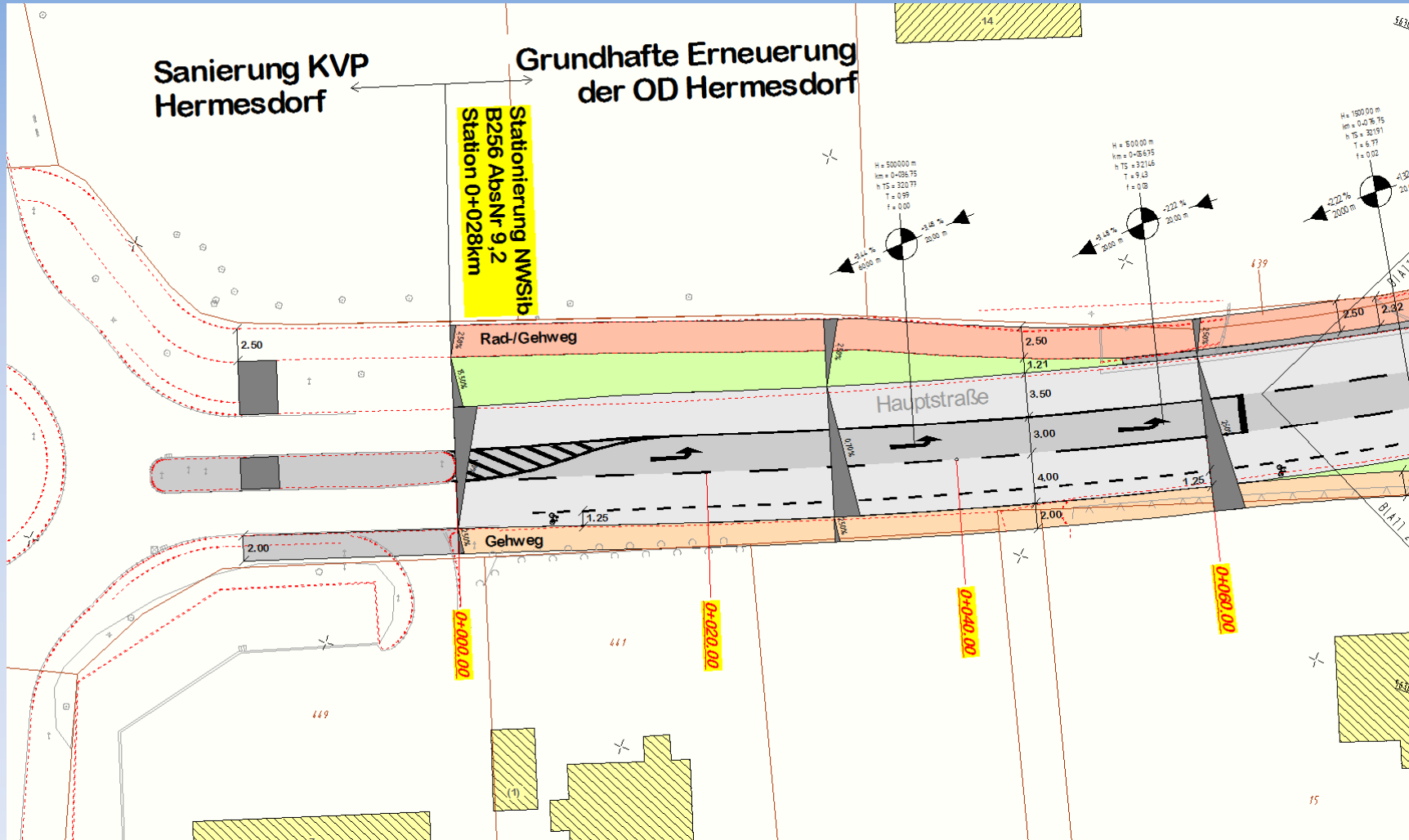


B256 – Umbau OD Hermesdorf

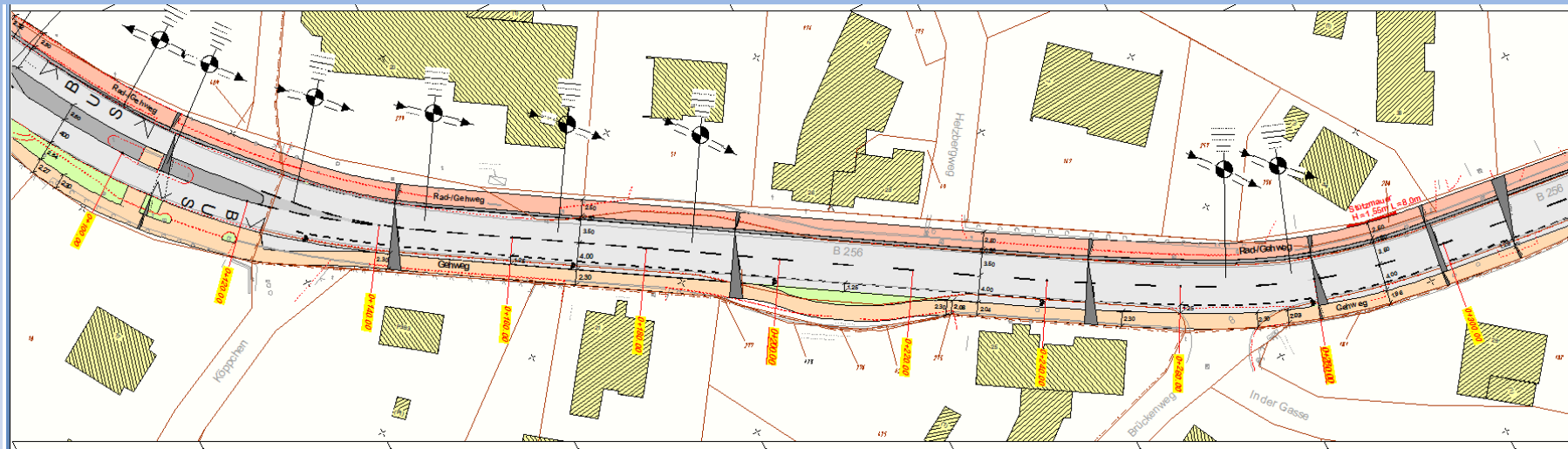
Systemquerschnitt



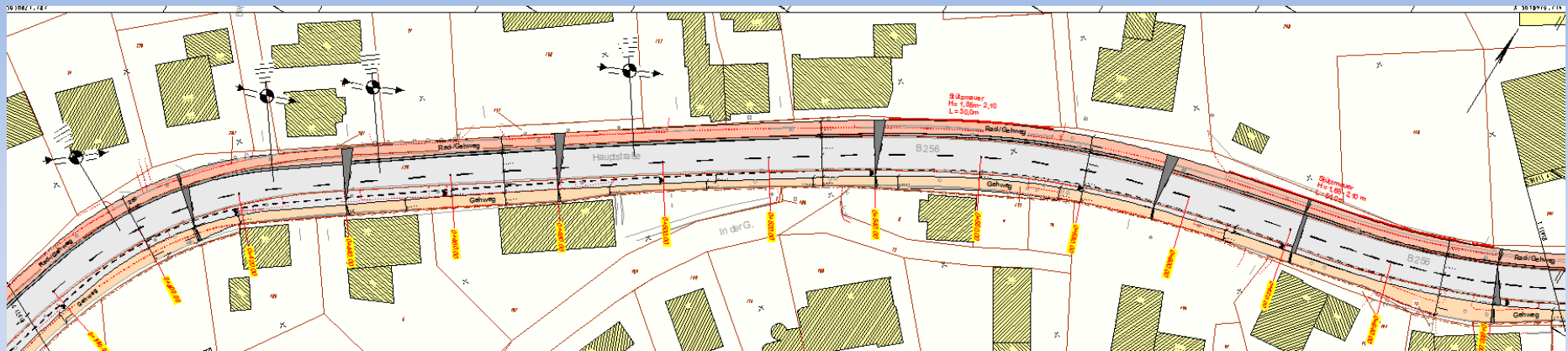
B256 – Umbau OD Hermesdorf



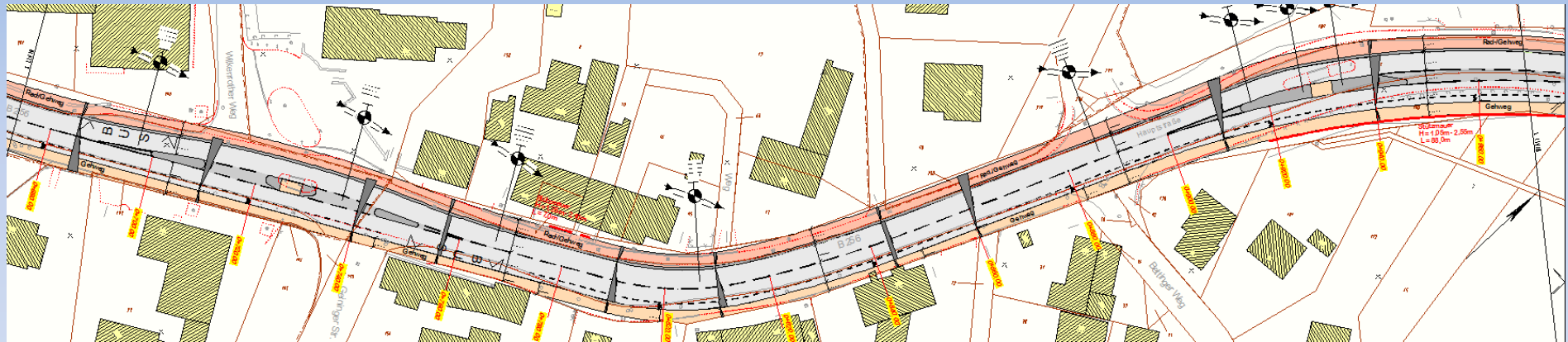
B256 – Umbau OD Hermesdorf



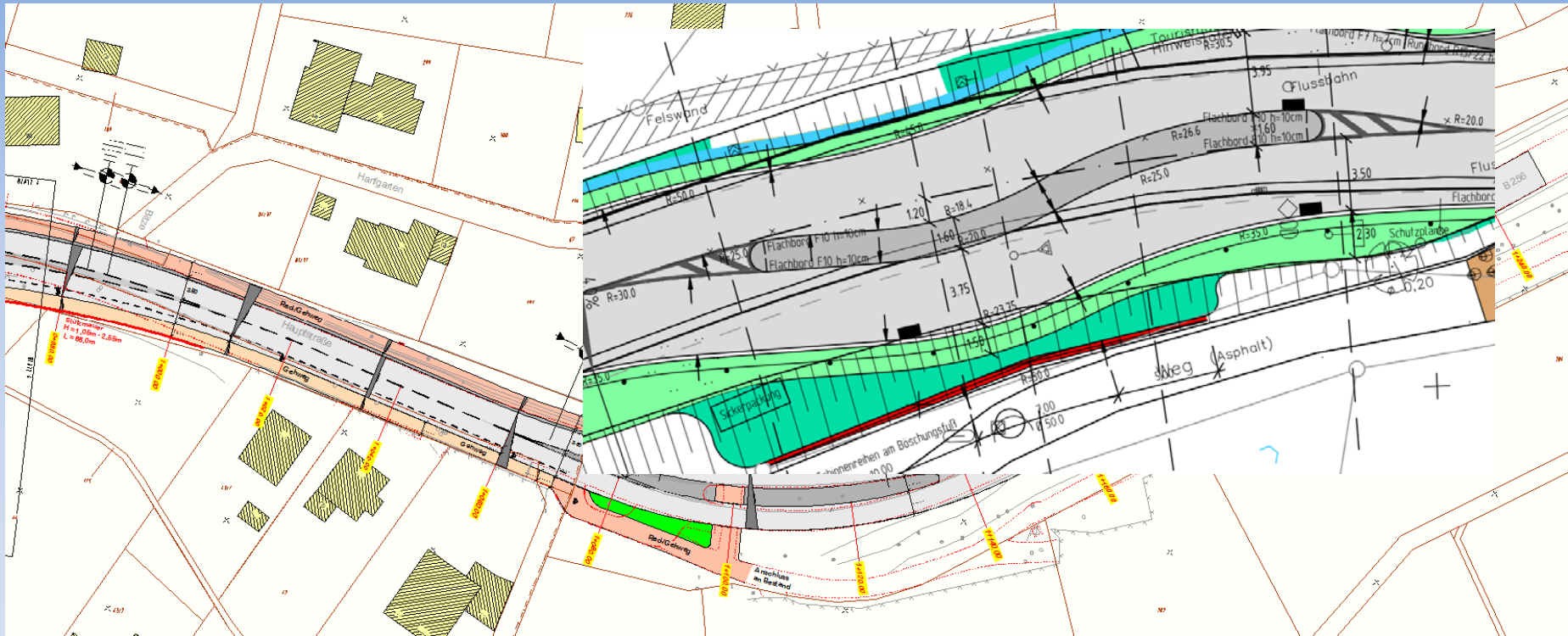
B256 – Umbau OD Hermesdorf



B256 – Umbau OD Hermesdorf



B256 – Umbau OD Hermesdorf



B256 – Umbau OD Hermesdorf

Regelquerschnitt RQ 1 (Station 0+560km)

